

# Social Policy and Disaster Risk Management

## *Paths for Enhancing a Virtuous Circle*

*Alonso Brenes*

Red de Estudios Sociales para la Prevención  
de Desastres en América Latina

Belmopán, 2023

*H. Brenes 1952.*



# The traditional relationship between disaster risk management and the sphere of social policy

## Extraordinary procedures and investments

- ✓ Housing
- ✓ Food
- ✓ Education
- ✓ Public health
- ✓ Subsidies





# The traditional relationship between disaster risk management and the sphere of social policy

## Key improvements since the 80s

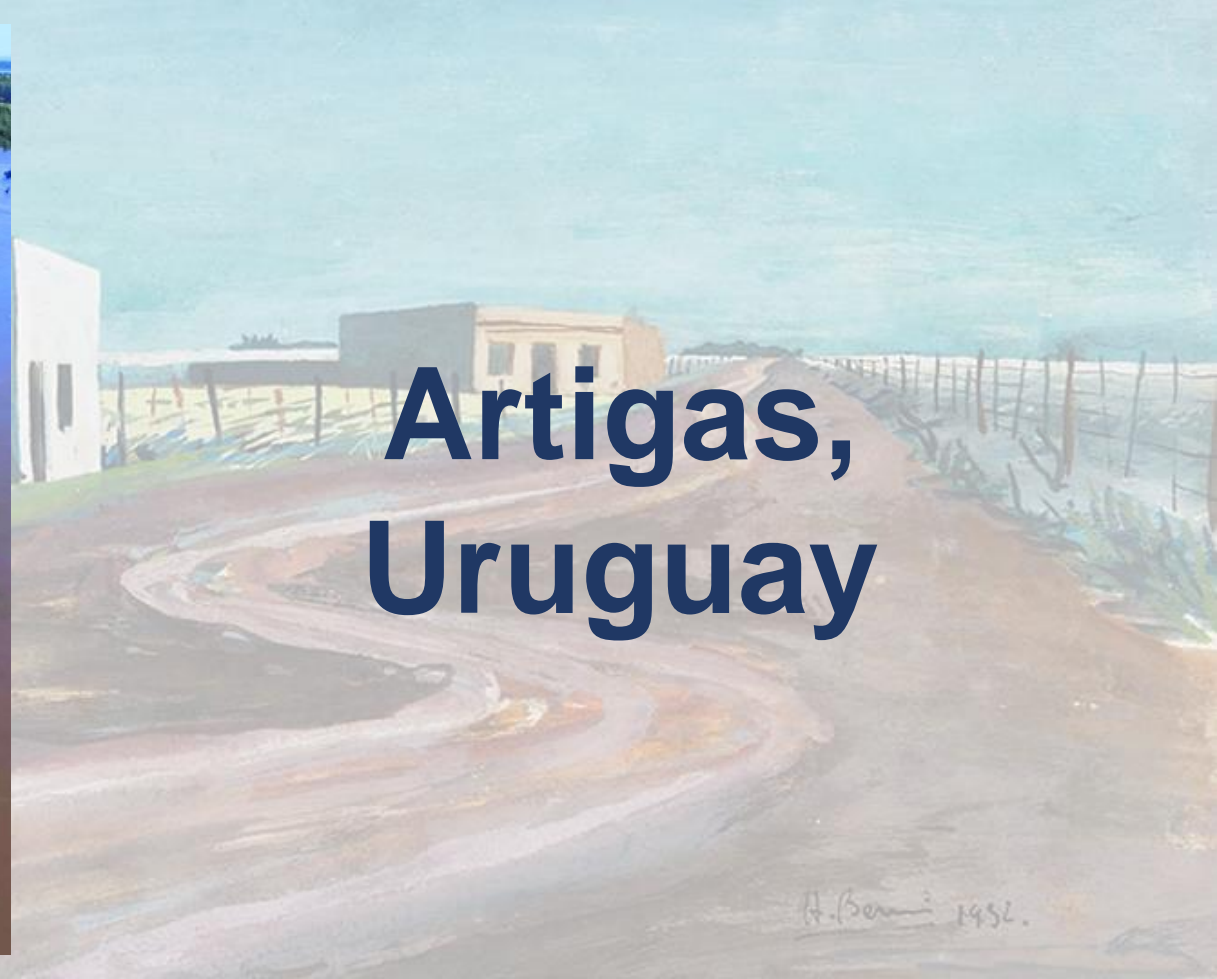
- ✓ Better beneficiaries identification.
- ✓ More comprehensive support.
- ✓ Better follow-up.
- ✓ Better budgeting.
- ✓ Consideration of the role of essential services.





# The traditional relationship between disaster risk management and the sphere of social policy

## The challenge of relocations



**Artigas,  
Uruguay**

H. Berni 1952.



# The traditional relationship between disaster risk management and the sphere of social policy

## Signs of a model in crisis

- ✓ Expenditure contraction since 2015 (+ impact of COVID19)
- ✓ Increasing impacts on infrastructure and services
- ✓ Increase of vulnerable population
- ✓ Political opposition to the social approach

*Efficiency in the investment is now more critical than ever.*

# Current context of influence

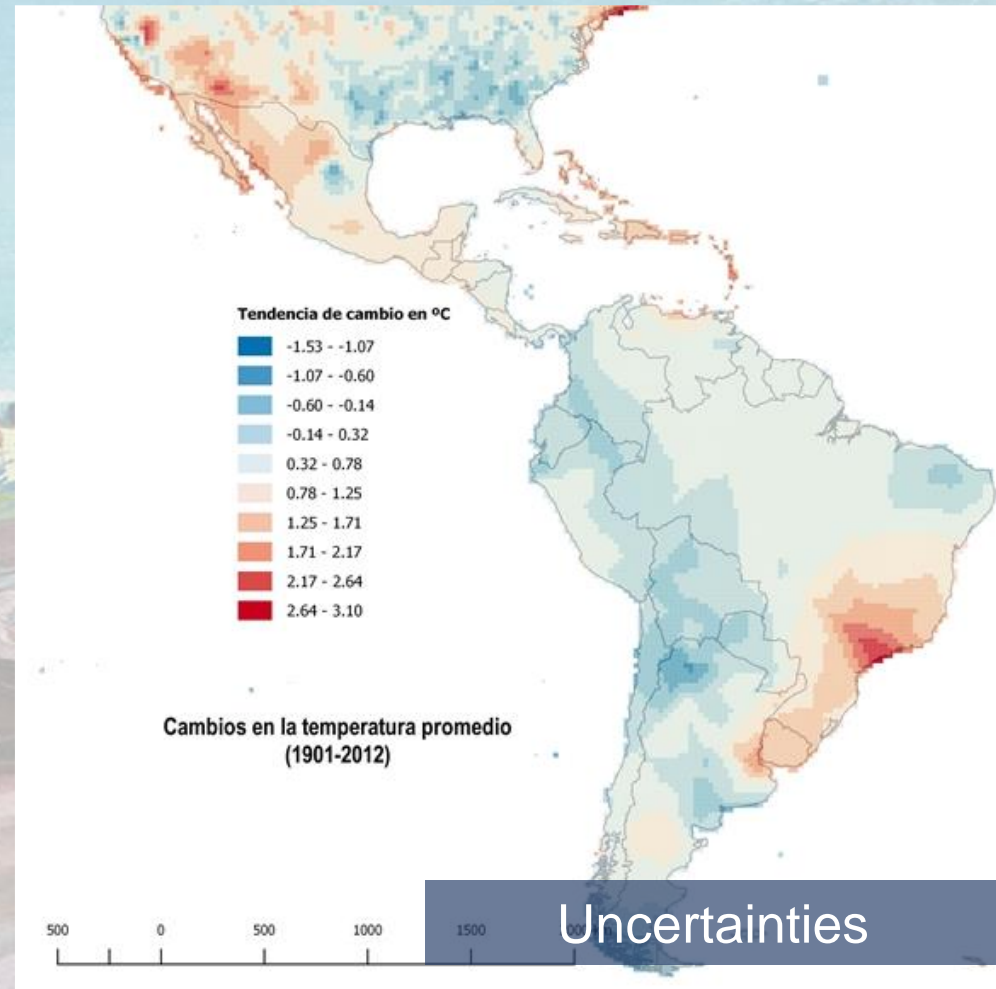
## Systemic impacts and new uncertainties

- ✓ Economic slowdown and fiscal crisis
- ✓ Inflationary pressures
- ✓ Influence of arm conflicts
- ✓ Management deficiencies and bureaucratic rigidity
- ✓ Corruption
- ✓ Demographic and migration pressures



# Current context of influence

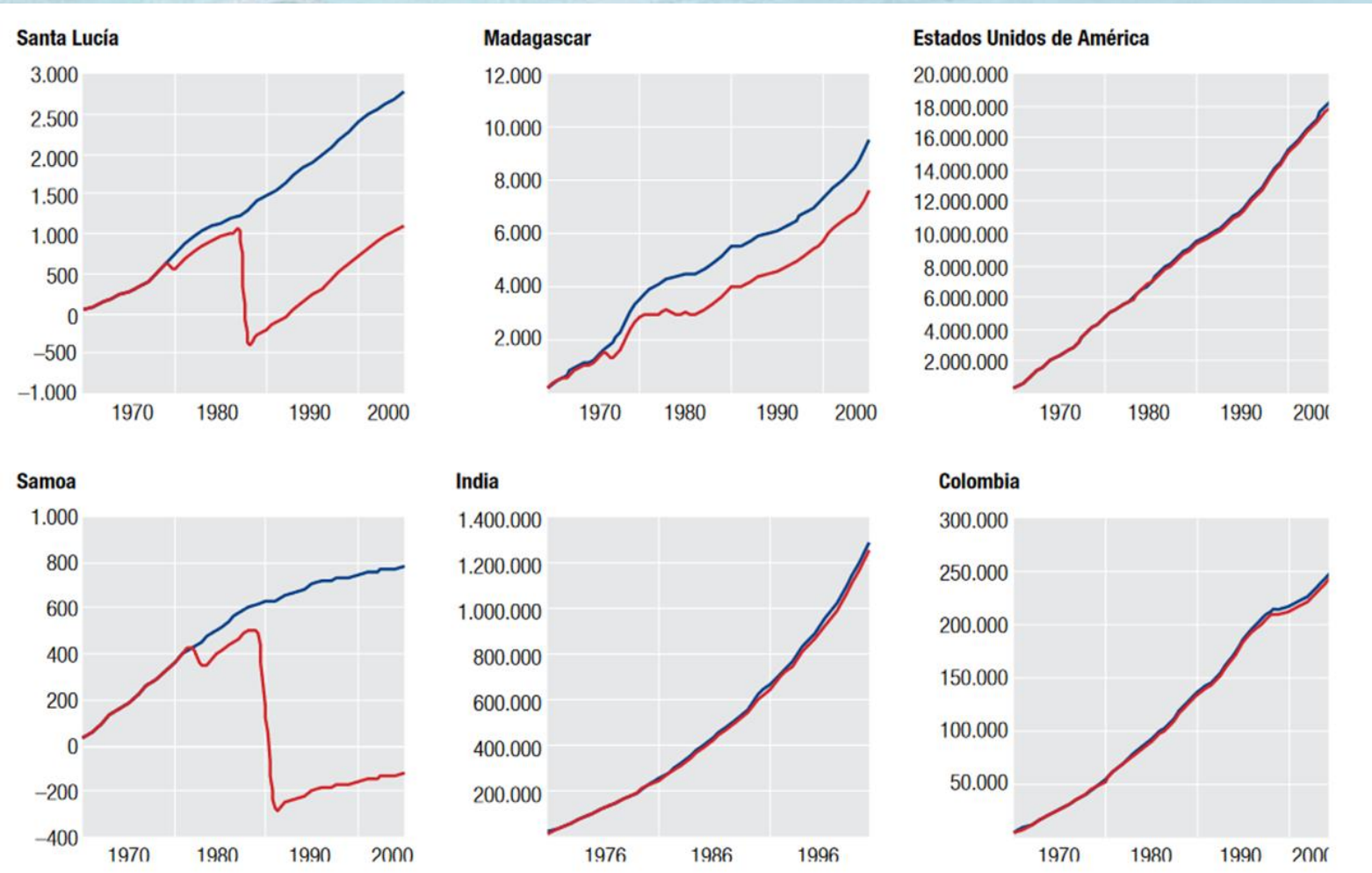
## Transformation of disaster risk profiles





# Current context of influence

## Macroeconomic impacts of disasters



**Debt**

**Investment contraction**

**Reallocation of resources**

**More taxes**

*H. Berni 1952.*



# Current context of influence

Intensive and extensive risk / Type of risk

	<b>Small incidents</b>	<b>Big incidents</b>
<b>Hydrometeorological</b>		
<b>Geological</b>		



# Disaster risk management – tackling the issue from the underlying drivers

From the symptom to the cause



Environmental degradation

H. Berni 1952.



# Disaster risk management – tackling the issue from the underlying drivers

From the symptom to the cause



Vulnerable livelihoods

H. Berni 1952.



# Disaster risk management – tackling the issue from the underlying drivers

From the symptom to the cause



Weak governance



# Disaster risk management – tackling the issue from the underlying drivers

Three complementary approaches within DRM

## Prospective management

Adopt in advance actions in development planning that promote the non-generation of vulnerability. It involves analyzing the risk in the future.



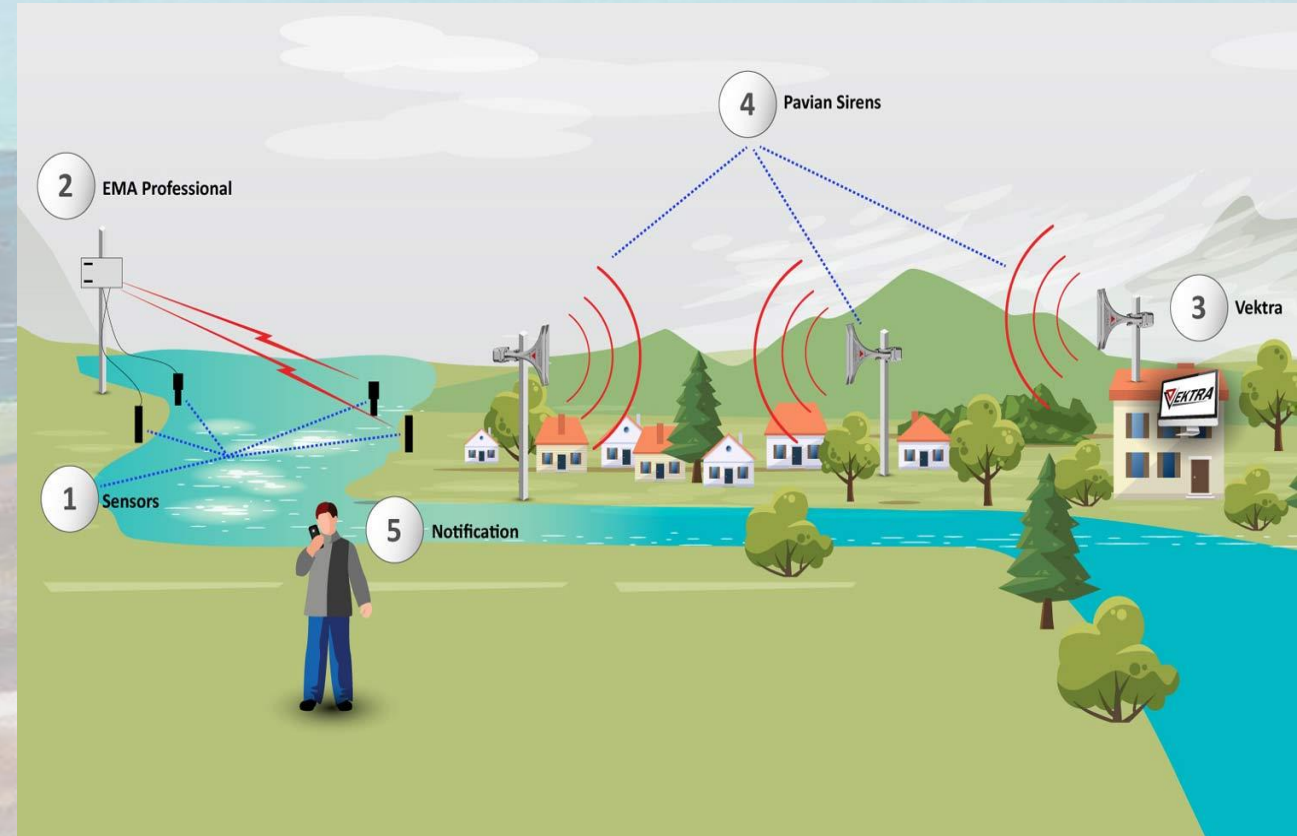


# Disaster risk management – tackling the issue from the underlying drivers

## Three complementary approaches within DRM

### Reactive management

It includes activities aimed at reducing damage and losses derived from the manifestation of threats.





# Disaster risk management – tackling the issue from the underlying drivers

Three complementary approaches within DRM

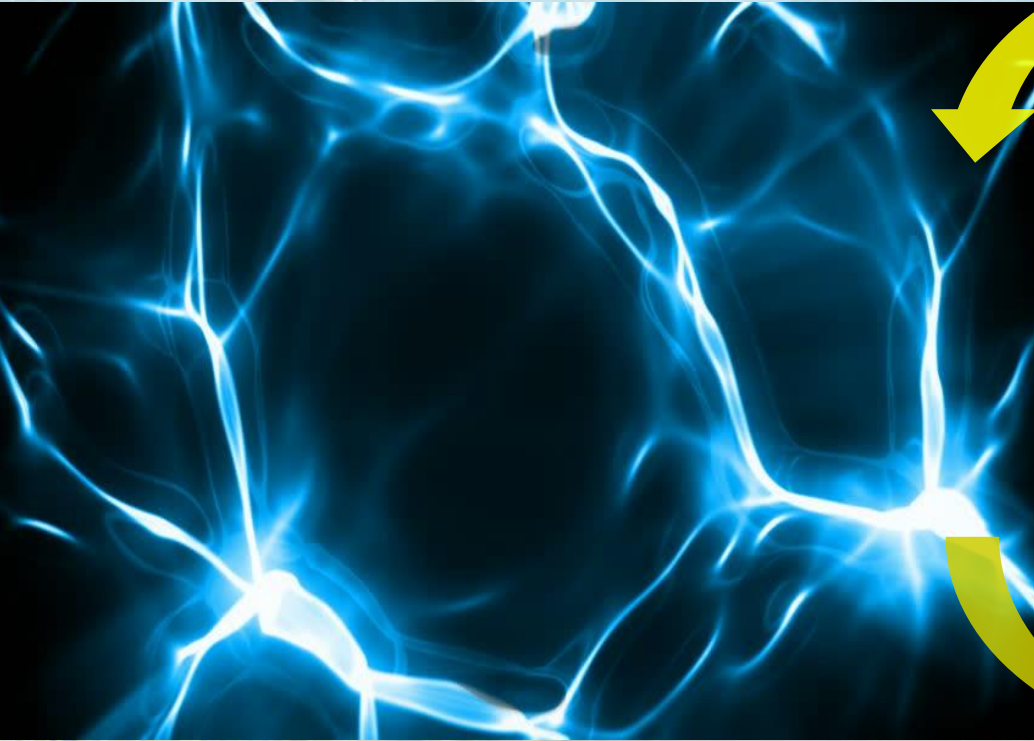
## Corrective management

It seeks to reduce potential impacts within contexts of residual risk or complex and slow reduction.





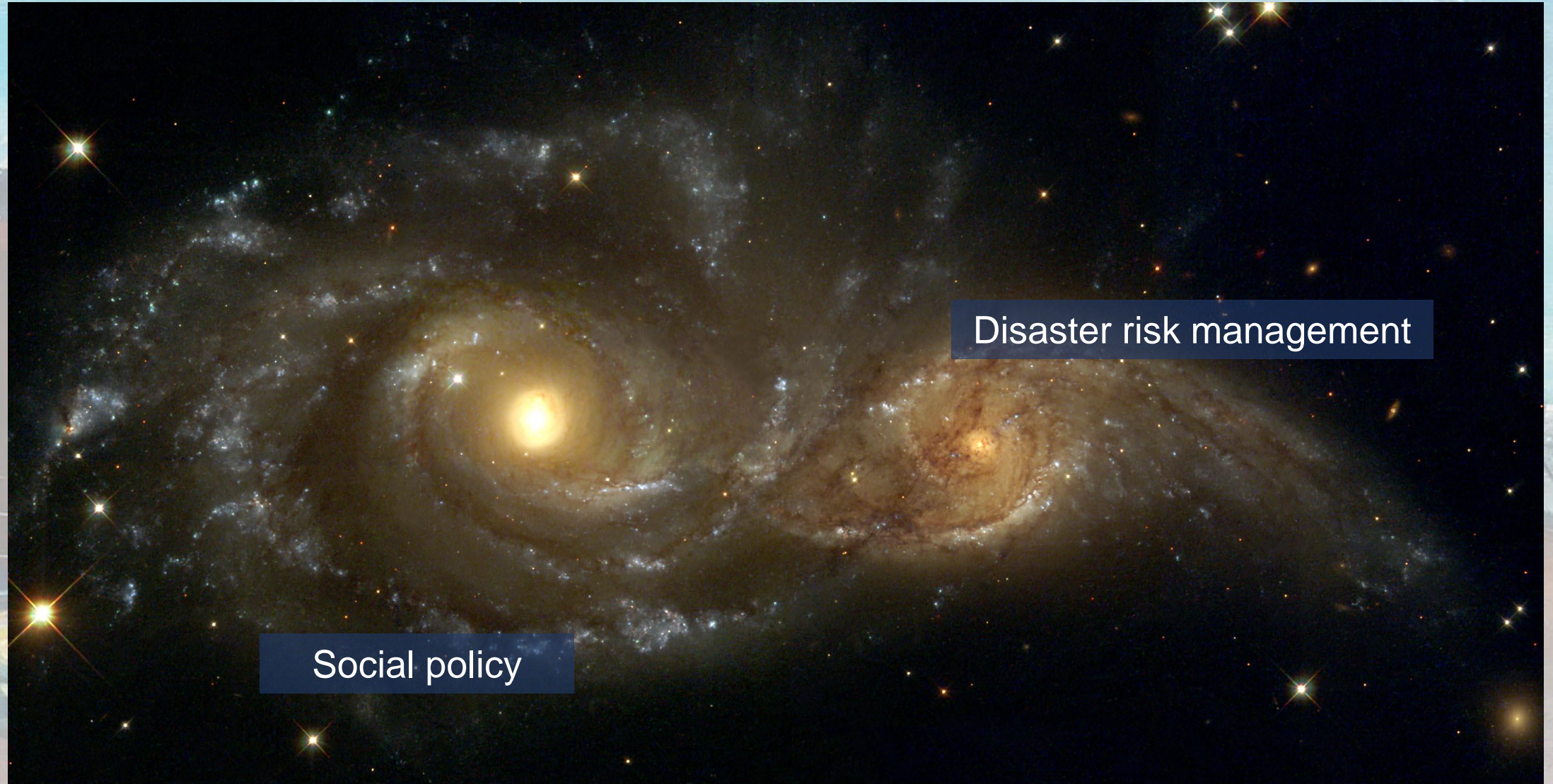
# Interaction between systems



H. Berni 1952.



# Interaction between systems



Social policy

Disaster risk management



# Promotion of virtuous circles



## Disaster Risk Management

Protection of vulnerable groups.

Recovery with transformation.

Protection of essential services.

## Social Policy

Transfers.

Better provision of services.

Quality labor markets.



# Promotion of virtuous circles

## Disaster Risk Management

Protection of vulnerable groups.

Recovery with transformation.

Protection of essential services.

Are these interactions working?

## Social Policy

Transfers.

Better provision of services.

Quality labor markets.

*Are we measuring the impacts of the investments?*



# Promotion of virtuous circles

## Four recommendations

1. Promote interaction mechanisms between social policy actors and disaster risk management.
2. Focus actions to address current and emerging hot spots of disaster risk.
3. Insist on strengthening local management capacities.
4. Protect built infrastructure and prevent damages and losses.



A painting of a rural landscape. In the foreground, a dirt road with a white center line curves from the bottom left towards the right. To the left of the road is a large, reddish-brown brick building with a dark doorway and a small window. On top of this building, there is a pile of green and white plants. In the middle ground, there is a smaller, white rectangular building. Further back, another building with a yellowish facade is visible. The background shows a vast, flat landscape under a sky filled with soft, white clouds. The overall style is impressionistic with visible brushstrokes.

Thanks

[alonso.brenes@lac-red.org](mailto:alonso.brenes@lac-red.org)