

**IV Latin American and Caribbean  
Regional Meeting of Logistic Port  
Communities:  
Network of Digital and Collaborative  
Ports**

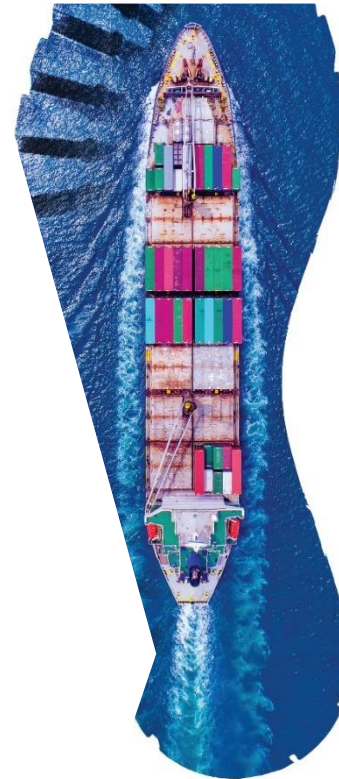
**Port of Spain, Trinidad and Tobago**

**8, 9 and 10 August 2019**

**SP/IVELCCLP:RPDC/DT N° 1-19**

# The Vision and Accomplishments of PLIPDECO in Enhancing Trade Facilitation and Logistics

Presentation by Ashley Taylor,  
August 8<sup>th</sup>, 2019



PAVING THE WAY



# Trade Facilitations and Logistics!

*“A picture is worth a thousand words”*



# What is Trade Facilitation?

- **World Bank** defines trade facilitation as *the simplification, modernisation and harmonisation of export and import processes.*
- **OECD** explains trade facilitation as *A specific set of measures that streamline and simplify the technical and legal procedures for products entering or leaving a country to be traded internationally.*

*Either way, the Trade Facilitation process seeks to enable importers and exporters to move goods and services faster and cheaper from source to destination.*



# What is Logistics?

*Logistics is the process of planning, implementing, and controlling procedures for the efficient and effective transportation and storage of goods, including services and related information, from the point of origin to the point of consumption.*

*The goal of logistics is to successfully meet customer requirements. This definition includes inbound, outbound, internal and external movements*



# Where does Trinidad & Tobago Rank?

- **OECD Trade Facilitation Index**

- Measured across 11 components, including the following:

*Information availability, involvement of the trade community, fees and charges, documents, automation, procedures and border agency cooperation*

- **Trinidad Score ->1.05 (max. 2)**

- **Other notables, international and regional:**

- USA ->1.82
- UK -> 1.75
- Jamaica -> 0.78
- Singapore -> 1.75
- Panama -> 1.31
- Barbados -> 0.72

# Where does Trinidad & Tobago Rank?

- **The Logistics Performance Index (LPI)** scores countries on how efficiently they move goods across and within borders.
- Measured across 6 components: *Customs, infrastructure, logistics competence, tracking and tracing, international shipments and timeliness*
- **For the 2018 Survey Trinidad Ranked 124 out of 160 countries with a score of 2.42 (max. 5)**
- **Other notables, international and regional:**
  - Germany(1) -> 4.20
  - USA(14) ->3.89
  - Jamaica(113) -> 0.78
  - Singapore(7) -> 4.0
  - Panama(38) -> 3.28

# Where does Trinidad & Tobago Rank?

- **Liner Shipping Connectivity Index** provides an indicator of a country's position within the global liner shipping network.
- *Measured across 5 components: the number of ships deployed to and from each country's seaports, their combined container-carrying capacity, the number of companies that provide regular services, the number of services and the size of the largest ship.*
- **Trinidad(81)->15.43**
- **Other notables, international and regional:**
  - China(1) ->151.91
  - USA(3) -> 90
  - Jamaica(51) -> 33.19
  - Singapore(2) -> 108
  - Panama(30) -> 48.94
  - Barbados(126) -> 7.44



# Global Economic Growth by Region

<b>Table 1.1</b>		<b>World economic growth, 2016–2018</b> (Annual percentage change)		
<b>Region or country</b>	<b>2016</b>	<b>2017<sup>a</sup></b>	<b>2018<sup>b</sup></b>	
<b>World</b>	<b>2.5</b>	<b>3.1</b>	<b>3.0</b>	
<b>Developed countries</b>	<b>1.7</b>	<b>2.3</b>	<b>2.1</b>	
of which:				
<b>United States</b>	<b>1.5</b>	<b>2.3</b>	<b>2.5</b>	
<b>European Union (28)</b>	<b>2.0</b>	<b>2.6</b>	<b>2.0</b>	
<b>Japan</b>	<b>1.0</b>	<b>1.7</b>	<b>0.9</b>	
<b>Developing countries</b>	<b>3.9</b>	<b>4.5</b>	<b>4.6</b>	
of which:				
<b>Africa</b>	<b>1.7</b>	<b>3.0</b>	<b>3.5</b>	
<b>East Asia</b>	<b>5.9</b>	<b>6.2</b>	<b>6.0</b>	
of which:				
<b>China</b>	<b>6.7</b>	<b>6.9</b>	<b>6.7</b>	
<b>South Asia</b>	<b>8.4</b>	<b>5.8</b>	<b>6.1</b>	
of which:				
<b>India</b>	<b>7.9</b>	<b>6.2</b>	<b>7.0</b>	
<b>Western Asia</b>	<b>3.1</b>	<b>3.0</b>	<b>3.3</b>	
<b>Latin American and the Caribbean</b>	<b>-1.1</b>	<b>1.1</b>	<b>1.8</b>	
of which:				
<b>Brazil</b>	<b>-3.5</b>	<b>1.0</b>	<b>1.4</b>	
<b>Countries with economies in transition</b>	<b>0.3</b>	<b>2.1</b>	<b>2.2</b>	
of which:				
<b>Russian Federation</b>	<b>-0.2</b>	<b>1.5</b>	<b>1.7</b>	
<b>Least developed countries</b>	<b>3.5</b>	<b>4.3</b>	<b>4.9</b>	

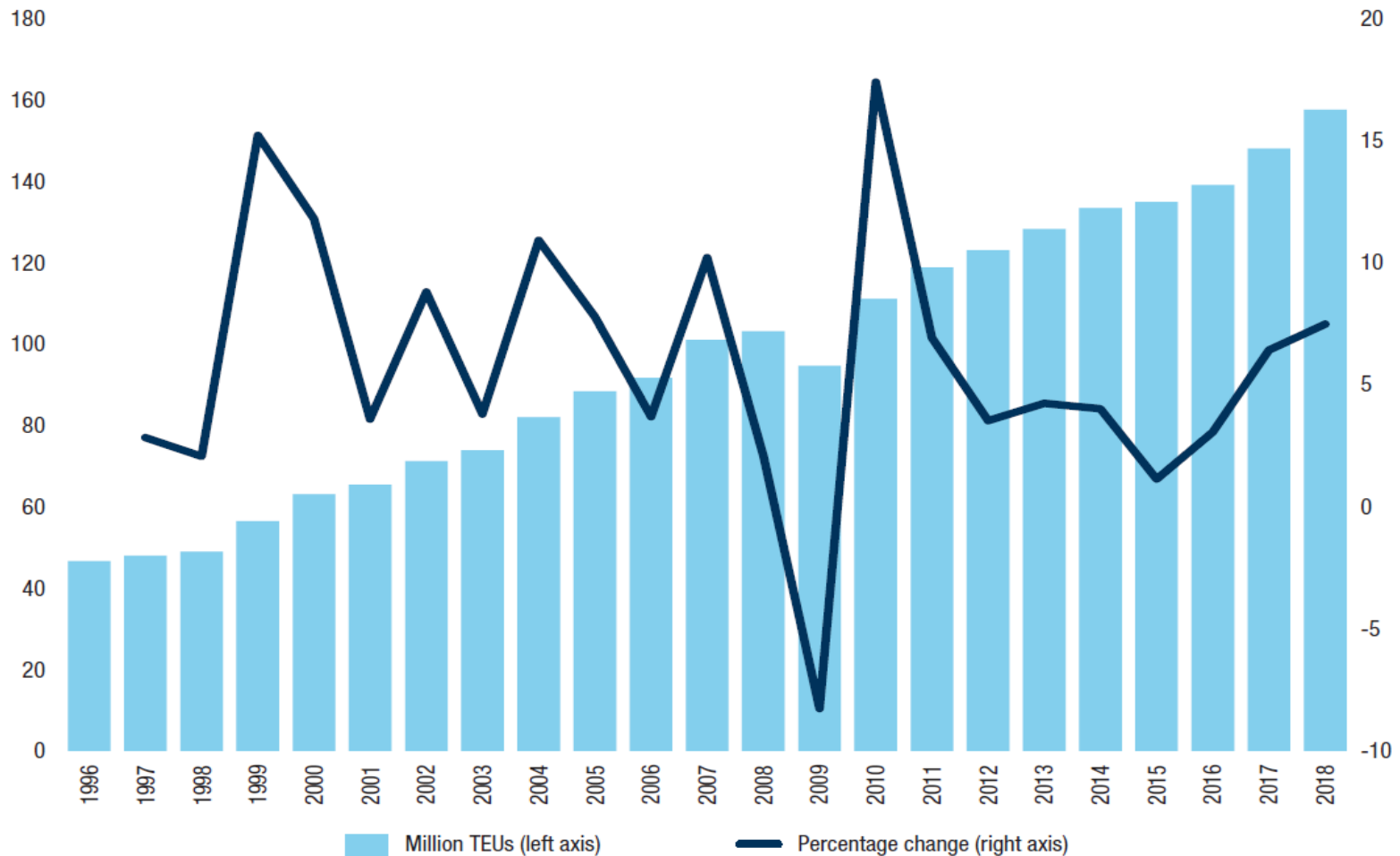
*Source:* UNCTAD secretariat calculations, based on United Nations, 2018 and UNCTAD, 2018a.

<sup>a</sup> Partly estimated.

<sup>b</sup> Forecast

# Growth in Containerised Cargo

**Figure 1.5** Global containerized trade, 1996–2018  
(Million 20-foot equivalent units and percentage annual change)



Source: UNCTAD secretariat calculations, based on data from MDS Transmodal, 2018.

Note: Data for 2018 are projected figures.

# Who we are

PLIPDECO is a publicly traded company with three (3) major lines of business:

## **Industrial Estate Management:**

Hosting the major components of a world class petrochemical energy sector and support industries

## **Port Operations:**

- (i) Cargo Handling
- (ii) Harbour Management

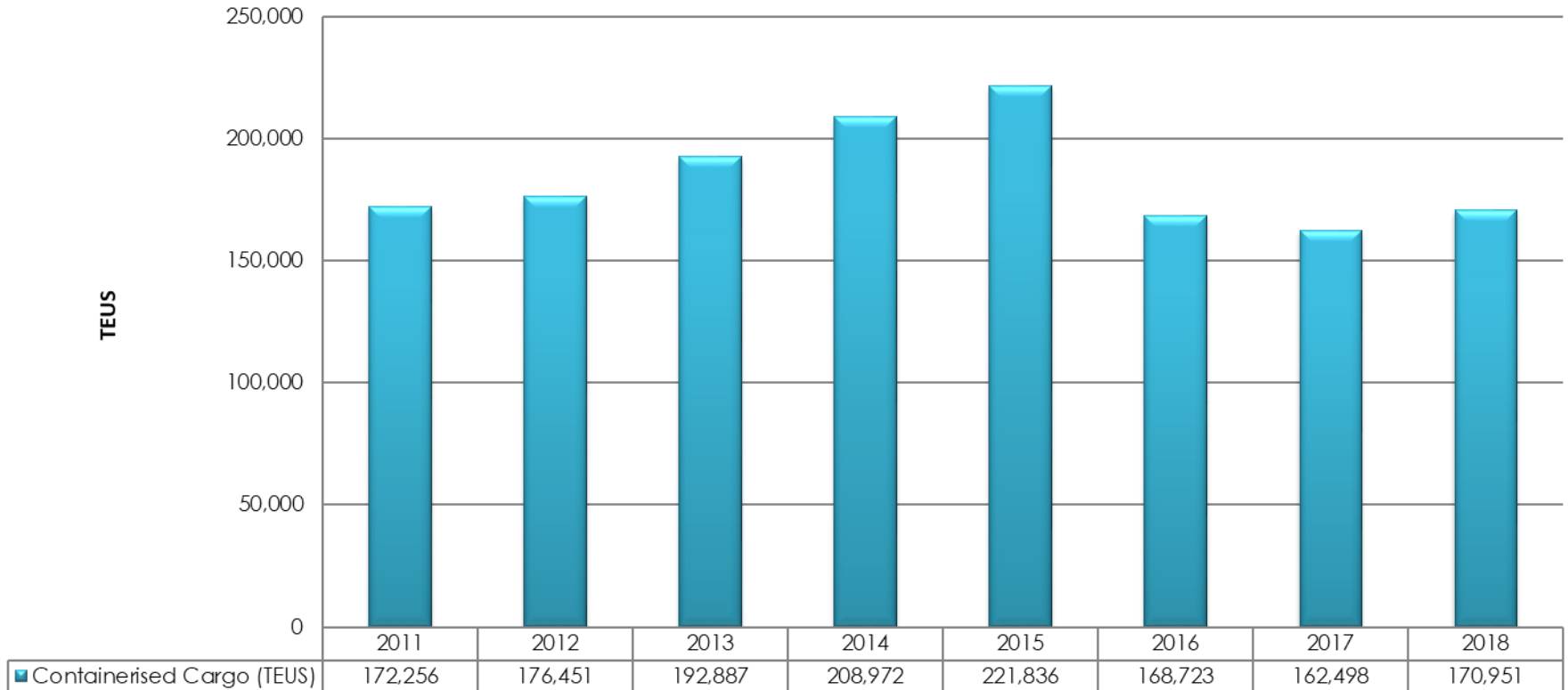
## **Logistics Services:**

- (i) Managed and leased warehousing
- (ii) Services along the supply chain

PLIPDECO employs approximately 1,000 persons mainly within the port operations while the combined employment of the Industrial Estate tenants is in excess of 10,000 persons

# Containerised Cargo Volumes

## Containerised Cargo



# Containerised Cargo Trend

Throughput Comparison: 2018 vs 2017

<b>TEUS</b>	<b>2018</b>	<b>2017</b>	<b>2018 vs 2017</b>
exports	76,990	72,863	Increase of 6%
imports	75,705	72,312	Increase of 5%
transshipment	18,256	17,323	Increase of 5%
<b>overall</b>	<b>170,951</b>	<b>162,498</b>	<b>Increase of 5%</b>

SIGNIFICANT INCREASES  
WERE ALSO RECORDED BY  
THE FOLLOWING LINES:



**+17.7%**



**+32.9%**



**+26.1%**



**+12.6%**



**+11.5%**

---

SUBSTANTIAL REDUCTIONS  
WERE RECORDED BY THE  
FOLLOWING LINES:



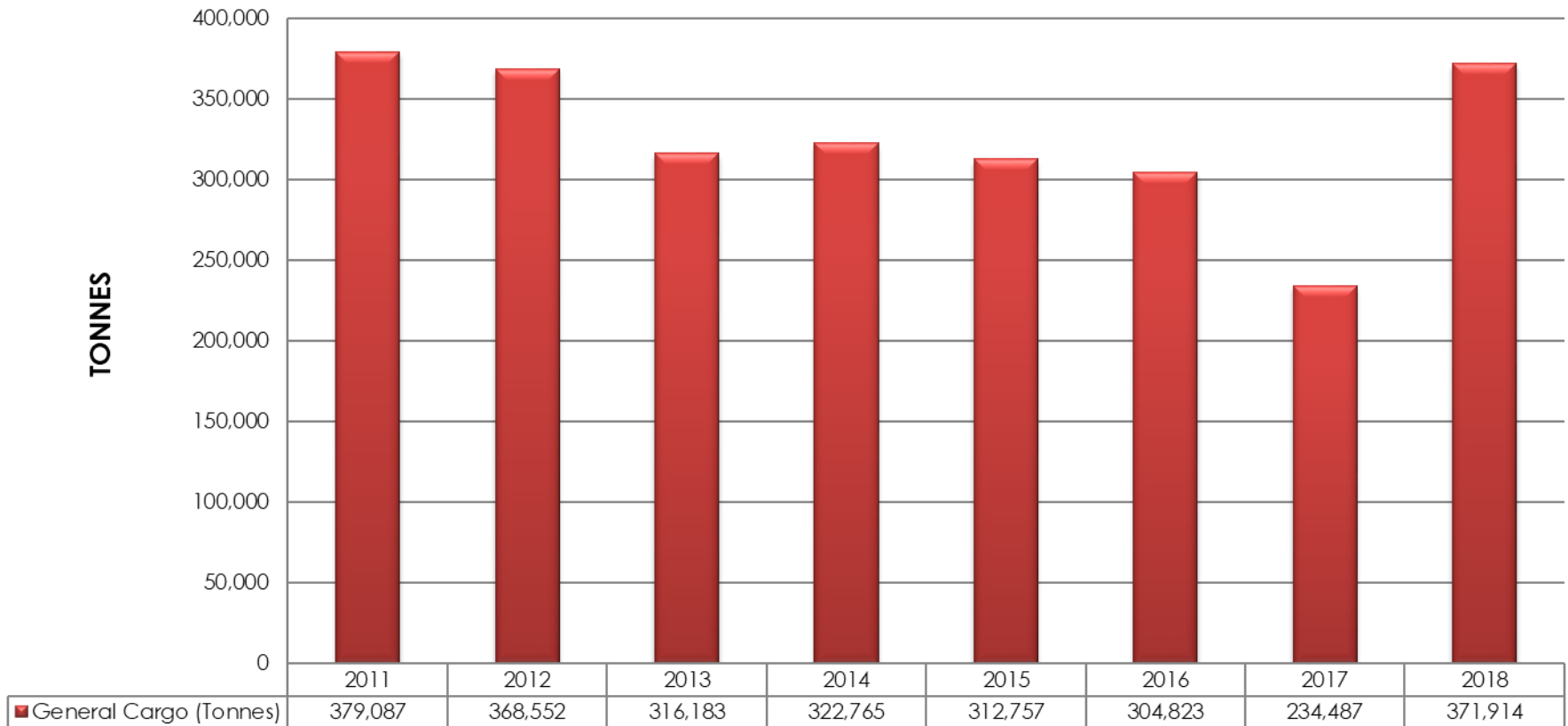
**-18%**



**-37.6%**

# General Cargo Volumes

General Cargo



# GENERAL CARGO TREND

Throughput Comparison: 2018 vs 2017

<b>Tonnage</b>	<b>2018</b>	<b>2017</b>	<b>2018 vs 2017</b>
exports	7,990	5,836	up 37%
imports	363,838	227,927	up 60%
transshipment	86	724	down 88%
<b>overall</b>	<b>371,914</b>	<b>234,487</b>	<b>up 59%</b>



INCREASES WERE  
RECORDED IN THE  
FOLLOWING KEY  
CATEGORIES:



PALLETIZED  
CARGO/  
BOXES

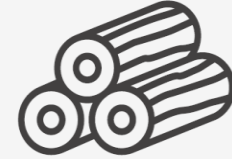
**+34.5%**



BULK

**+95.6%**

LUMBER/  
PLYWOOD



**+16.3%**

DECREASES  
WERE NOTED IN  
THE FOLLOWING  
CATEGORIES:



VEHICLES/  
EQUIPMENT

**-10.6%**



STEEL

**-17.4%**

# What Defines Our Service in Trade and Logistics

**Flexibility**



**Communication  
& Data**



**Adaptability**



**Reliability**



**Speed**



**Customer &  
Consistency**



# What Defines Our Service in Trade and Logistics

**Technology & Knowledge**



**Process & Integration**



**Service Reach**



**People & Quality**



**Cost Management**



**Equipment & Infrastructure**



# What are the Current Systems and Strategies?



# Equipment

- **Acquisition (within 5 years):**
  - 1 Mobile Harbour Crane
  - 4 Reach Stackers
  - 1 Empty Container Handler
  - 6 Terminal Trucks
  - 12 Forklifts
  - 12 Trailers
- **Current:**
  - 2 Gantry Cranes
  - 2 Mobile Harbour Cranes
  - 6 RTGs
  - 5 Reach Stackers
  - 2 Empty Container Handlers
  - 21 Trucks
  - 12 Forklifts
  - 31 Trailers



# People, Training and Development

- **Current:**
  - Continuous cross training and skills development
  - Comprehensive training plan executed annually
  - MSc Port and Maritime
  - Stable industrial relations climate





# Infrastructure

- **Infrastructure (5 years)**
  - Rehabilitation to Berths 1 A, 3 and 4
  - Secondary RTG storage area for exports
  - Additional bays at warehouse



# Technology and Automation

- **Current**
  - Navis N4
  - Port wireless blanket
  - CCTV System
  - GPS on port equipment
  - LCL Locator System
  - Automated weighbridge system (Bridgeware)

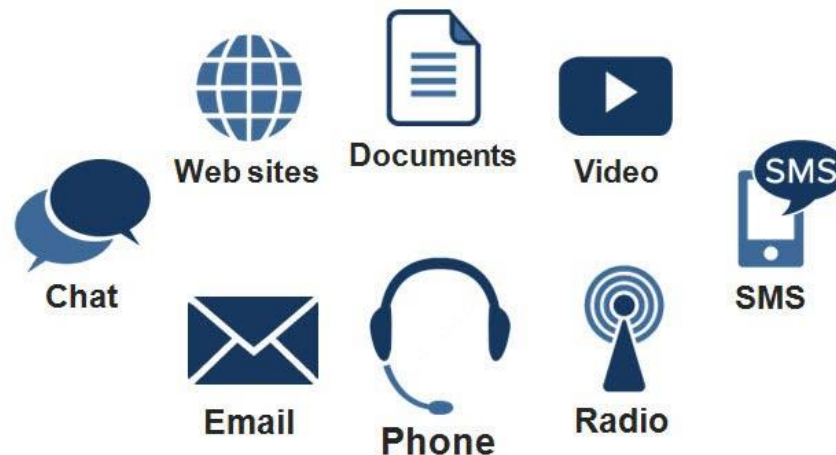




# Customer Support/ Communication/Data

- **Current**

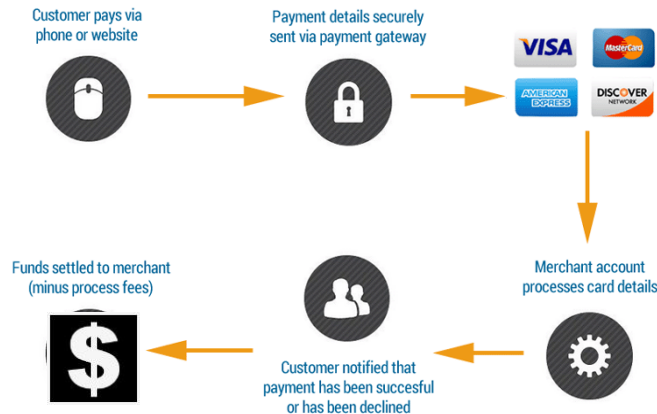
- SMS updates for customers
- WebAccess to container data through Navis
- Pilot roll-out of Container Management System
- Quarterly Port Users' Meeting
- Quarterly survey and feedback mechanism



# Processes

- **Current**

- Direct delivery of cargo
- Express processing
- 24/7 Port operation
- Customs operated container scanners
- Port Marine PDS System
- Single Electronic Window (SEW)



# Services

- **Current**
  - Demurrage and detention system
  - Facilitation of movement of spares and ship's supplies
  - Weekend gate operations
  - Basic Logistics



# What are the Future Systems and Strategies?



# Equipment

- **Acquisition (within 5 years):**

- 1 Mobile Harbour Crane
- 4 Reach Stackers
- 1 Empty Container Handler
- 6 Terminal Trucks
- 12 Forklifts
- 12 Trailers

- **Future:**

- 1 Manlift
- 1 Empty Container Handler
- 1 RTG
- Corrosion Control and Repair to Gantry Cranes

## **Current:**

- 2 Gantry Cranes
- 2 Mobile Harbour Cranes
- 6 RTGs
- 5 Reach Stackers
- 2 Empty Container Handlers
- 21 Trucks
- 12 Forklifts
- 31 Trailers



# People, Training and Development

- **Current:**

- Continuous cross training and skills development
- Comprehensive training plan annually
- MSc Port and Maritime
- Stable industrial relations climate



- **Future:**

- Continuous cross training and skills development
- Comprehensive training plan annually
- Certification
- Skills sharing



# Infrastructure

- **Infrastructure (5 years)**
  - Rehabilitation to Berths 1A, 3 and 4
  - RTG secondary bay for exports
  - Additional bays at warehouse



- **Future:**

- Repairs to Berth 5
- Rehabilitation to RTG storage area
- Pipe and equipment lay-down area for the energy industry
- Offsite container on chassis storage

# Technology and Automation

- **Current**

- Navis N4
- Port wireless blanket
- CCTV System
- GPS on port equipment
- LCL Locator System
- Automated weighbridge system (Bridgeware)



- **Future:**

- Navis N4 / Asycuda Interface
- General Cargo Management System
- Automated Labour Call-out System
- The Paperless Gate



# Customer Support/ Communication/Data

- **Current**

- SMS updates for customers and stakeholders
- WebAccess to container data through Navis
- Pilot roll-out of Container Management System
- Quarterly Port Users' Meeting
- Quarterly survey and feedback mechanism

- **Future:**

- Full roll-out of Container Management System



# Processes

- **Current**

- Direct delivery of cargo
- Express processing
- 24/7 Port operation
- Customs operated container scanners
- Port Marine PDS System



- **Future:**

- SEW Maritime Module implementation
- Secure Port System

# Services

- **Current**

- Demurrage and detention system
- Facilitation of movement of spares and ship's supplies
- Weekend gate operations
- Basic Logistics

- **Future:**

- Bunkering
- Transportation

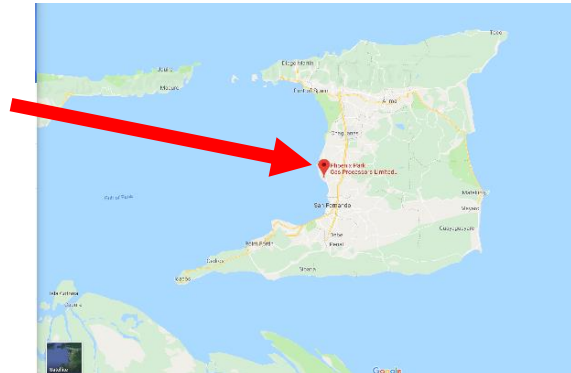


# Strategic Outlook for Trade and Logistics

- New Port and Dry Dock Facilities, Point Lisas and La Brea



- Phoenix Park Industrial Estate



- PLIPDECO Warehouse & Logistics Services



# Strategic Outlook for Trade and Logistics

- Oil and Gas Services



- Bunkering Services



- Business Transformation & Repositioning of Port



- Customs Reform and TTRA



**THANK YOU**